

AccountMate 6.5 for LAN System Manager Module

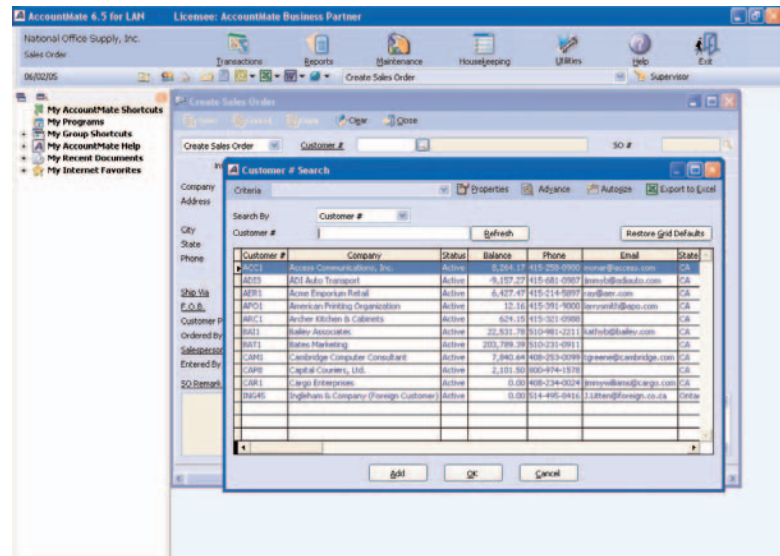
AccountMate 6.5 for LAN's System Manager is the control center for the entire AccountMate 6.5 for LAN accounting system and must be activated in order to run any of the AccountMate 6.5 for LAN modules. System Manager controls the system environment and setup, on-line help, multi-level password security, printer setup, module and company selection, system date, all pop-up menus, among others. It also initializes the system and has multilingual capability.

AccountMate 6.5 for LAN's System Manager boasts a modern-looking interface as well as a user-definable shortcut pane and a power toolbar that helps increase productivity. With the power toolbar, you can easily access Microsoft Office applications with one simple mouse click and quickly access the most recently opened documents. These are just few of the powerful features that the AccountMate 6.5 for LAN's System Manager that provide an easier way of doing business.

System Manager Module

Desktop

The AccountMate 6.5 for LAN's desktop is enhanced for easy access to various AccountMate functions and external programs. The desktop also includes a productivity toolbar and a user-definable Shortcut Pane. Not only does the AccountMate 6.5 for LAN's desktop help increase productivity; you can also use it as your desktop replacement.



User Interface

Main Toolbar

The Main Toolbar allows you to select company, module, and functions available for each module. It replaces the menu system used in the previous AccountMate versions.

Power Toolbar

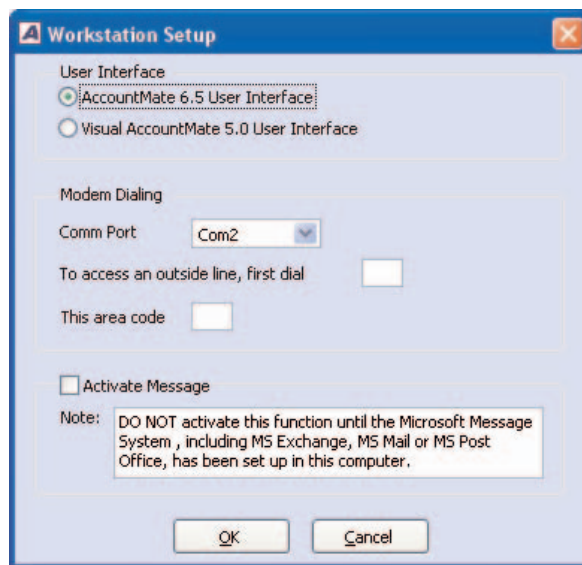
The Power Toolbar allows you to access quickly some of the AccountMate system functions and Microsoft Office applications such as Excel, Word, Outlook, and Internet Explorer, allowing you to save time and to increase your productivity. The Power toolbar also gives you the quickest way to access the most recently opened documents. All AccountMate functions currently opened are now included in a dropdown list, so you can easily toggle between multiple AccountMate functions.

Shortcut Pane

The Shortcut Pane comes with 6 groups: My AccountMate Shortcuts, My Programs, My Group Shortcuts, My AccountMate Help, My Recent Documents, and My Internet Favorites. The Shortcut Pane is customizable for each AccountMate user. To maximize productivity, you can add multiple levels of sub-folders to organize your favorite shortcuts. You can also organize the entire Shortcut Pane at one time.

Dual Desktop Interface

The new AccountMate user interface is best viewed with a 1024 x 768 (or higher) screen resolution. Since some workstations may not support this video display option, you can choose to revert to the menu system used in previous AccountMate versions. Each workstation can toggle between the new and old user interface. This feature provides you with flexibility to upgrade older hardware one at a time.



Workstation Setup

Enhanced Lookup

The lookup functionalities are greatly enhanced. Each lookup window can be customized to include only selected columns. The columns can be displayed in a specific order. The settings are saved as “criteria” and can be flagged for personal or public use. Similar to Microsoft Excel, the lookup grid can be “auto-sized” to fit the data in each column. For those who need to re-use the lookup data for other purposes, you can export the lookup data to an Excel spreadsheet.

Simplified Installation Process

All components of AccountMate 6.5 for LAN are now included in the same CD instead of different medias.

Product Key

To simplify further the product activation process, a new 25-digit Product Key replaces the serial numbers and activation keys used in previous versions. When a valid Product Key is entered during the installation process, the source code modules purchased will be listed for selection to install the source code files.

Maintenance Key

A 15-digit Maintenance Key is used to track the expiration date of the annual maintenance plan. As the maintenance expiration date approaches, a reminder and Reseller information (if available) are displayed upon login. Each time the annual maintenance plan is renewed, a new Maintenance Key is issued.

Installing License File from Any Drive

The installation of the License File no longer requires you to copy the file to a floppy disk. Starting with this version, you can simply copy the License File to any folder on your computer.

Hassle-Free Module Activation

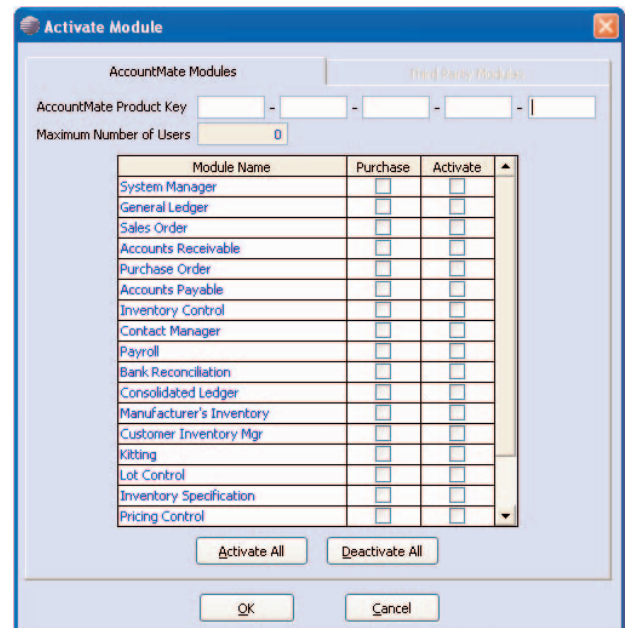
Activating the various modules you have is as easy as 1-2-3. You simply have to enter the product key provided, and the system will automatically activate all the modules you purchased.

Printing License Information

To facilitate the renewal of an AccountMate Maintenance Plan, the Print License Info feature is added in this version. This feature provides the capability to print a report that shows your company name and address, Support #, Product Key, Maintenance Key and Maintenance Expiration Date, and even the AccountMate Reseller's contact information, if that information is entered in the AccountMate system. A separate section on the report is available for you to enter your contact information prior to faxing or mailing the report to your AccountMate Reseller (or to AccountMate).

AccountMate Reseller Information

AccountMate understands the need to maintain contact between the Resellers and their clients. To help achieve this, we have introduced the capability to store the AccountMate Reseller Information in the system. This feature allows AccountMate Resellers to enter their contact information into each client's AccountMate system. In addition, the Email Reseller function allows end-users to open a new email window with the Reseller's email address automatically entered in the "To" field; thus, making the process of contacting their AccountMate Reseller much easier.



Activate Module

Error Log

AccountMate provides an Error Log that stores pertinent information about each error that you encounter whenever a program failure occurs. The Error Log helps tremendously in determining the cause of the error and possibly resolving it in less time. Each time you encounter an unexpected error, you have the option to e-mail the error report to your AccountMate Reseller, AccountMate Technical Support, or any other person who can help troubleshoot the error. You may also choose to send the error report later.

Administrator Program

The new Administrator program allows you to access several system functions without running the AccountMate 6.5 for LAN accounting application.

Data Manager

The Data Manager function is designed to perform the recalculation of data and update of year-to-date sales or purchase amounts to correct any inconsistencies in the GL Account ID balances, customer data, employee data, inventory data, and/or vendor data.

Transaction Rollback Gives Additional Data Protection

This fundamental System Manager feature guarantees data integrity by ensuring that - if you ever suffer a power failure while a transaction is in process - the likelihood that you will have incomplete entries or corrupted files is kept to the absolute minimum. This crucial safety feature offers significant data integrity benefits.

Improved On-line Help

Online Help is presented in an intuitive approach - used to present product information via pop ups, extended texts, and extensive links to related topics.

Electronic Manual

A printed User's Manual may not always be available for everyone when needed - the AccountMate user documentation is included in electronic form.

Other Features

- Support up to 999 companies, each with its own chart of accounts.
- Allows running multiple functions without exiting the currently accessed function
- Multiple levels of security down to individual fields
- Email address fields are up to 60 characters long
- Can cascade and tile windows
- Behavior of form controls conforms with the latest Windows operating system
- Drillable fields are underlined; when hovered, these are indicated by hand icon
- Miscellaneous Code Listing is available to provide a list of the miscellaneous code types, e.g., customer class, industry, etc., used for multiple purposes throughout the system
- Maintain data for an infinite number of years, limited only by available disk space
- No preprinted forms are needed for various special forms, e.g., Sales Order, Invoices, Packing Slips, etc.
- Most functions are password-protected, and access to the application can be restricted by day and time

- A Current Login User List is available to aid in determining who needs to exit AccountMate before you run a process, e.g., period-end closing, data backup, etc., that requires exclusive access to the application
- Print-Batch function enables convenient set up of report batches in convenient cycles for periodic printing
- Print Label function facilitates easy printing of labels for customers, vendors, inventory items, and other records
- Table Browser and Exporter function provides ability to browse an entire data file with password protection to prevent unauthorized users from viewing sensitive information and allows export to text files and Microsoft Excel spreadsheets.
- Generating reports is made easy through report macros; there is no need to re-select manually the report criteria each time.
- Function keys enable screen navigation without the mouse



AccountMate - Software That Fits

88 Rowland Way, Suite 350 | Novato, California 94945
800-877-8896 | 415-883-8873 | www.accountmate.com